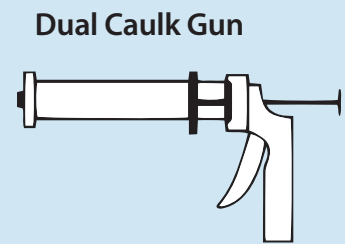
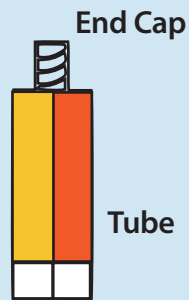
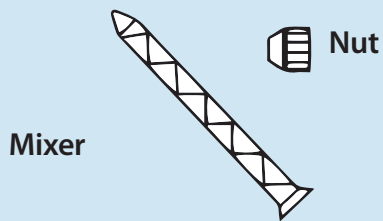
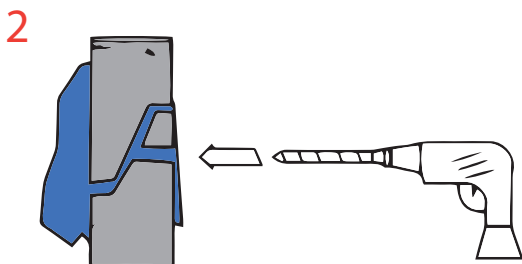


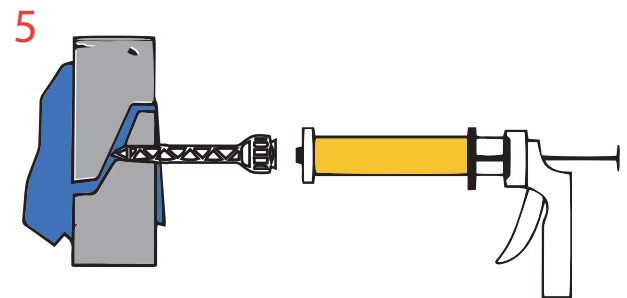
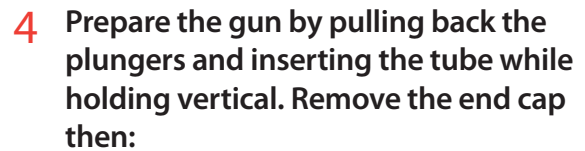
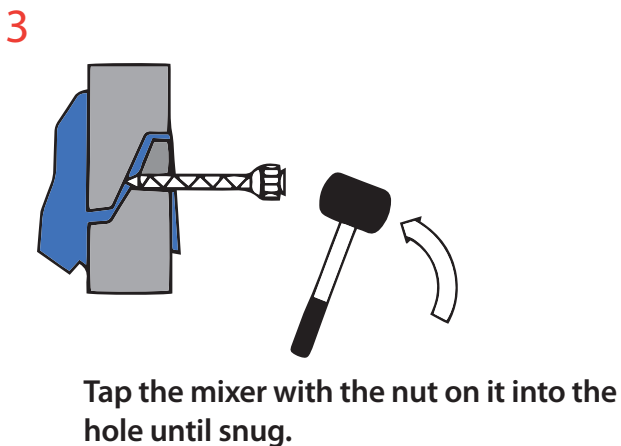
SealGuardII Instructions for Use



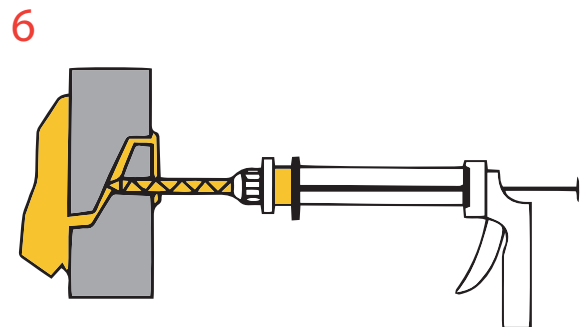
Tools Needed Hammer drill
5/8" masonry bit
Putty knife



Drill 5/8" diameter hole to intersect the leak path.



Quickly align threads on the tubes with the nut on the mixer and tighten until secure.



Pump gun vigorously to expel grout to refusal or seal. If grout is washing out, either pump slower or stop pumping and watch grout until it reacts halfway down the mixer then quickly give a pump to expel and repeat.

SealGuard II Hints for Use

GROUTING PROBLEMS

PROBLEM	SOLUTION
Slow Reaction	Tubes are cold. Immerse in hot water for 10 minutes.
Grout Washes Out	Water looks “milky”. Stop pumping to allow grout to react in the first 3 to 5 inches of mixer, and then resume pumping. Repeat as required. Make sure output (water) is plugged with burlap, rags, or oakum. Force any of the above into cracks with a screwdriver and hammer. Move injection hole further away from output.
Quick Reaction	Tubes are too warm. Cool by placing tubes in 70° F water.
Leaking around Mixer Tube in Hole	Wrap a rag or burlap around the static mixer, tape to the mixer then tap the mixer into the hole.
Difficult to Disengage Tripper Release	Tap trigger release with a small hammer then slide the plunger back.

CLEAN UP

Snap mixers with a sharp downward motion after injection to remove.

Use a putty knife to scrape excess material from concrete.

Dispose of waste foam with ordinary wood or plastic waste.

